

APPENDIX A

Surrenden Area Light Touch Residents Parking Scheme Consultation report August 2020

Background

In October 2019, residents in the Surrenden area were written to in order to gauge whether there was support for a residents parking scheme.

The results from this initial consultation showed that 69.2% supported the introduction of a residents parking scheme with a preference being for a 5 day light-touch scheme (63.65% light-touch scheme, 62.2% Monday to Friday). At the June 2020 Environment, Transport and Sustainability Committee a decision was made to carry out a consultation for a light touch scheme.

Headline Findings

The consultation received a response rate of 26.2%.

Support for a resident parking scheme:

- **74.0%** of respondents support the implementation of a residents parking scheme.
- **26.0%** of respondents do not support the implementation of a residents parking scheme

Operating hours

- **55.9%** Would like a scheme to operate 9am to 10am and 2pm to 3pm (5 days a week, Monday to Friday)
- **44.1%** Would prefer different hours of operation

Methodology

Brighton & Hove City Council Land and Property Gazeteer was used to provide 1660 property addresses in the proposed Surrenden Area scheme boundary. An information leaflet and detailed map were sent to each address. People were asked to go online to complete a questionnaire. People could also request a paper copy of the questionnaire with a prepaid envelope for reply. 420 (97.0%) responses were received online, 12 by mail (2.8%) and 1 via email. The consultation was advertised on the council's website, via social media and by a press-release to local media. The consultation ran from 17 July to 14 August 2020.

Results

435 valid responses¹ were received from within the proposed scheme boundary giving a response rate of 26.2%.

Q1 Would you like a parking scheme in your area?

(response base 430²)

Yes		No		Total
Number	%	Number	%	
318	74.0	112	26.0	430

Results on a street by street basis were as follows:

(response base 430)

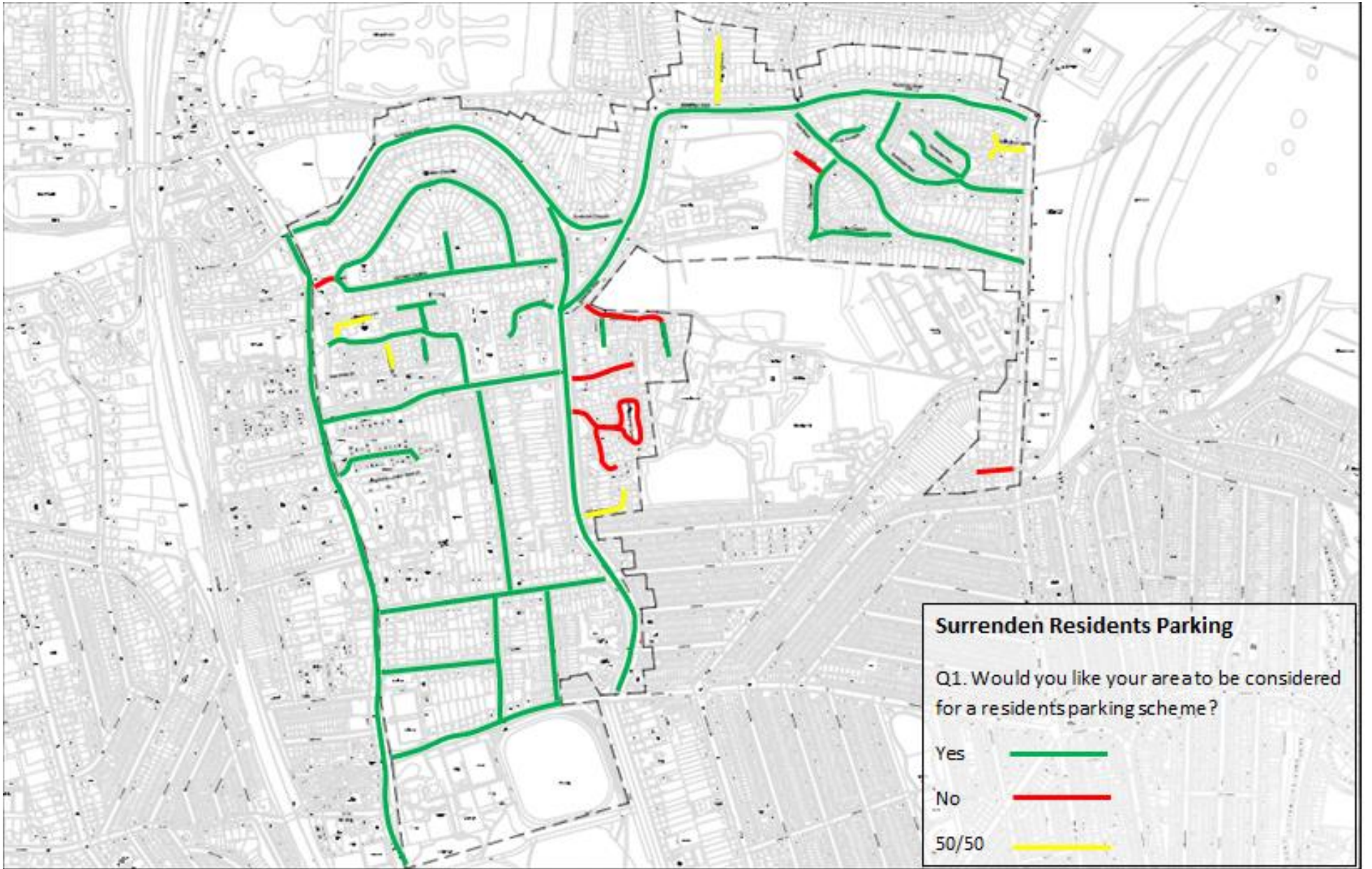
Q1 Would you like a parking scheme in your area?

Street	Number properties mailed	Number responses	Response rate %	Yes		No	
				Number	%	Number	%
Bavant Road	17	6	35.3	5	83.3	1	16.7
Beacon Close	15	4	26.7	1	25.0	3	75.0
Cliveden Close	96	1	1.0	1	100	0	0
Cornwall Gardens	65	31	47.7	28	90.3	3	9.7
Ditchling Road	23	0	0.0	0	0	0	0
Draxmont Way	9	4	44.4	1	25.0	3	75.0
Fairlie Gardens	17	8	47.1	7	87.5	1	12.5
Fircroft Close	7	2	28.6	1	50.0	1	50.0
Friar Close	11	7	63.6	5	83.3	1	16.7
Friar Crescent	50	16	32.0	13	81.3	3	18.8
Friar Road	52	24	46.2	21	87.5	3	12.5
Friar Walk	8	3	37.5	2	66.7	5	16.7

¹ 85 responses were removed from the analysis for the following reasons: 23 were duplicate cases, 47 were from outside the area and 15 were submitted with incomplete addresses

² Response base = number of people answering this question (some respondents didn't answer all questions)

Street	Number properties mailed	Number responses	Response rate %	Yes		No	
				Number	%	Number	%
Harrington Road	131	30	22.9	25	83.3	5	16.7
Harrington Villas	35	15	42.9	14	93.3	1	6.7
Hollingbury Copse	7	2	28.6	1	50.0	1	50.0
Holly Close	8	1	12.5	1	100	0	0
Knoyle Road	34	4	11.8	4	100	0	0
Laine Close	37	4	10.8	2	50.0	2	50.0
London Road	212	12	5.7	7	58.3	5	41.7
Mulberry Close	12	3	25.0	2	66.7	1	33.3
Oak Close	2	0	0.0	0	0	0	0
Poplar Close	8	6	75.0	3	50.0	3	50.0
Preston Drove	19	12	63.2	9	90.0	1	10.0
Preston Road	50	2	4.0	2	100	0	0
Surrenden Close	15	10	66.7	5	50.0	5	50.0
Surrenden Crescent	71	28	39.4	21	75.0	7	25.0
Surrenden Holt	32	11	34.4	4	36.4	7	63.6
Surrenden Park	60	24	40.0	17	73.9	6	26.1
Surrenden Road	222	78	34.7	63	81.8	14	18.2
The Approach	12	2	16.7	0	0	2	100
Varndean Close	6	2	33.3	2	100	0	0
Varndean Drive	97	9	9.3	5	55.6	4	44.4
Varndean Gardens	42	18	42.9	12	66.7	6	33.3
Varndean Holt	17	9	52.9	6	66.7	3	33.3
Varndean Road	49	14	28.6	11	78.6	3	21.4
Walnut Close	13	3	23.1	2	66.7	1	33.3
Whittingehame Gardens	46	17	37.0	8	47.1	9	52.9
Withdean Crescent	53	13	24.5	7	53.8	6	46.2
Total	1660	435	26.2	318	74.0	112	26.0



Q2 Would you like the scheme to operate from 9am to 10am and 2pm to 3pm (5 days a week, Monday to Friday) (Response base 395)

Yes		No (I would like different hours of operation)		Total
Number	%	Number	%	
221	55.9	174	44.1	395

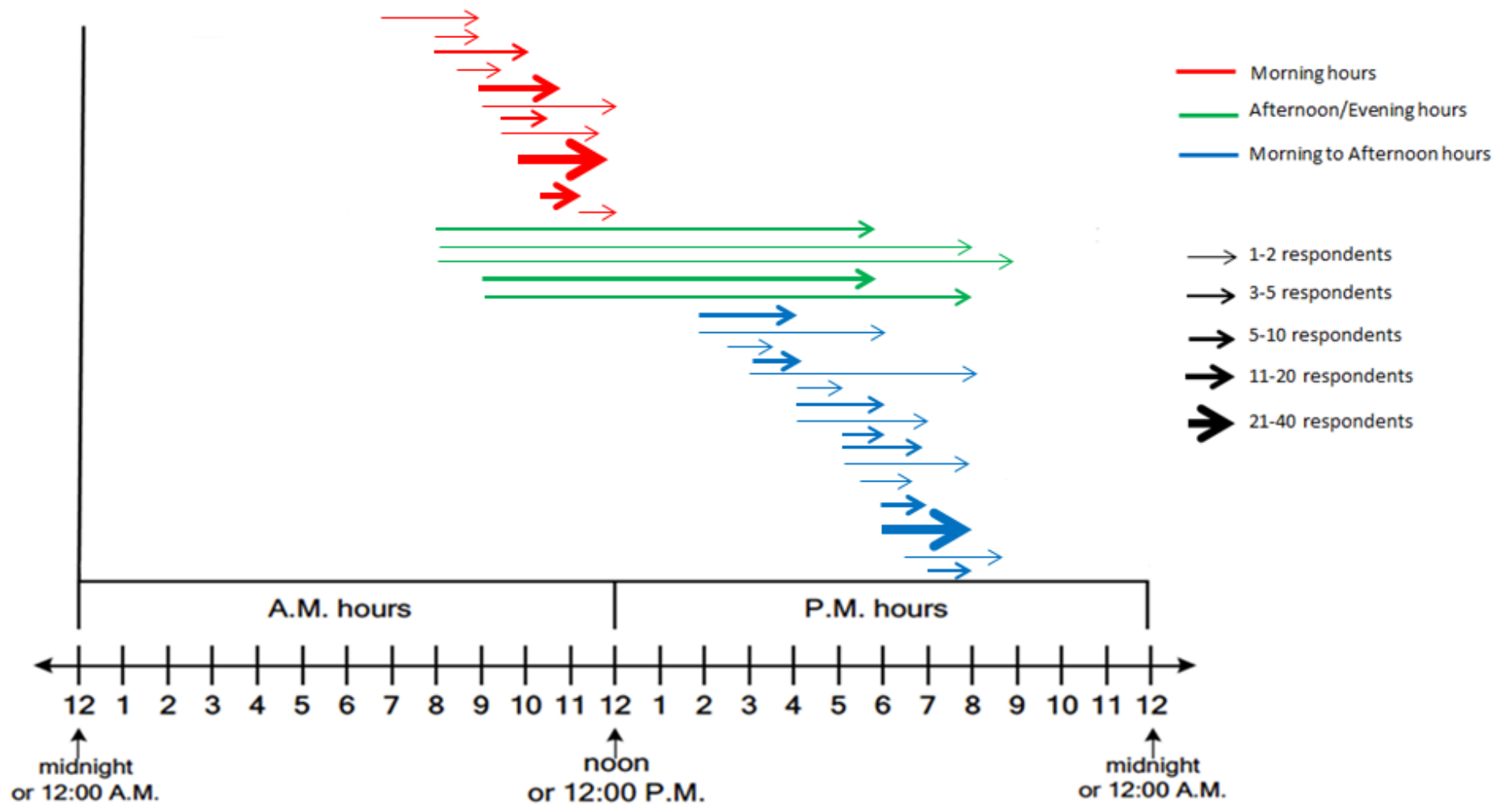
Q2b Respondents who answered ‘no’ for Question 2 could suggest alternative timings for the scheme. A number of respondents chose not to suggest specific time slots and instead; 24 respondents asked for a full scheme, 24 respondents want weekends included. Other one-off responses were for 2 hours instead of 1 per day, Saturdays to be included, 24 hours per day and 1 hour only per day.

The most popular suggestions³ for specific alternative times are shown below:

Time slot	Number of times mentioned
10am to 12pm	25
6pm to 8pm	25
10am to 11am	13
2pm to 4pm	10
9am to 11am	9
3pm to 4pm	6
6pm to 7pm	6
9am to 6pm	5

The full list of suggestions was wide ranging and responses are all plotted on the graphic below:

³ Only times mentioned more than five times included



Q3 Respondents were asked whether they are a resident, a business owner or manager or work in the area. (Respondents could tick more than one option).

	Number of responses
Resident	425
Business owner or manager	19
Work in the area	25
Other	5

Q4 How many cars in your household?

No. of cars	Number of responses
0	22
1	197
2	185
3	18
4 or more	6

Q5a What type of business do you own or manage in the area?

What type of business?	Number of responses
Retail outlet	1
Office-based	16
Other includes: Consultancy, plumber, builder, web developer	15
Total responses	32

Q5b How many vehicles are directly associated with your business?

No. of vehicles	Number of responses
0	27
1	12
2	3

Q7 Any further comments?

An open text box enabled respondents to add comments. These comments were grouped together and themed as follows:³ The top ten types of comments are listed in the following table:

Comments made	Number of times mentioned
Don't want double yellow lines across driveways / don't want more dyls	50
No need for a scheme	46
Not enough residents parking spaces / need more than one permit per household	32
I support SAPC report ⁴	24
Need scheme ASAP / Too long to wait	20
In favour because of current parking difficulties / general positive comments	18
Concerned about displacement	15
Need a parking solution for Varndean College	14
Don't want to pay for parking	13
Need more electric vehicle charging bays	12

⁴ The Surrenden Area Parking Campaign group produced their own recommendations towards the end of the consultation period.

Demographic Information

Age	Number	%
18-24	2	0.6
25-34	17	5.3
35-44	37	11.6
45-54	75	23.4
55-64	88	27.5
65-74	67	20.9
75+	34	10.6
Total	320	100

Gender	Number	%
Male	194	54.0
Female	165	46.0
Non Binary	0	0
Total	359	100

Do you identify as the gender you were assigned at birth?	Number	%
Yes	345	100
No	0	0
Total	345	100

Disability	Number	%
Yes, a little	44	12.3
Yes, a lot	18	5.0
No	296	82.7
Total	358	100

Of those who answered “yes”, disabilities were as follows:

Please state the type of impairment which applies to you.	Number
Physical impairment	36
Sensory impairment	3
Learning disability/ difficulty	1
Long-standing illness	23
Mental health condition	5
Development condition	0
Autistic Spectrum	1
Other	6

Ethnic Origin		Number	%
White	White English/ Welsh/ Scottish/ Northern Irish/ British	309	89.6
	Irish	4	1.2
	Gypsy or Irish Traveller	0	0
	Any other white background	23	6.7
Asian or Asian British	Bangladeshi	0	0
	Indian	1	0.3
	Pakistani	1	0.3
	Chinese	0	0
	Any other Asian background	3	0.9
Black or Black British	African	1	0.3
	Caribbean	1	0.3
	Any other Black background	0	0
Mixed	Asian & White	2	0.6
	Black African & White	0	0
	Black Caribbean & White	0	0
	Any other mixed background	0	0
Any other ethnic group	Arab	0	0
	Any other ethnic group	0	0
Total		345	100

Sexual Orientation	Number	%
Bisexual	5	1.7
Gay Man	4	1.3
Heterosexual/ straight	285	94.4
Lesbian/ Gay Woman	4	1.3
Other	4	1.3
Total	302	100

Religious Belief	Number	%
I have no particular religion or belief	137	42.3
Buddhist	6	1.9
Christian	116	35.8
Hindu	0	0
Jain	0	0
Jewish	6	1.9
Muslim	15	4.6
Pagan	0	0
Sikh	0	0
Agnostic	15	4.6
Atheist	34	10.5
Other	6	1.9
Other philosophical belief	4	1.2
Total	324	100

Are you a carer	Number	%
Yes	37	10.1
No	331	89.9
Total	368	100

If yes, do you care for a:	Number
Parent	21
Partner or Spouse	5
Child with special needs	7
Friend	0
Other family member	0
Other	3

Armed Forces	Yes		No	
	Number	%	Number	%
Are you currently serving in the UK armed forces?	1	0.3	315	99.7
Have you ever served in the UK armed forces?	10	3.3	295	96.7
Are you a member of a current or former serviceman or woman's immediate family/ household?	5	1.6	300	98.4

