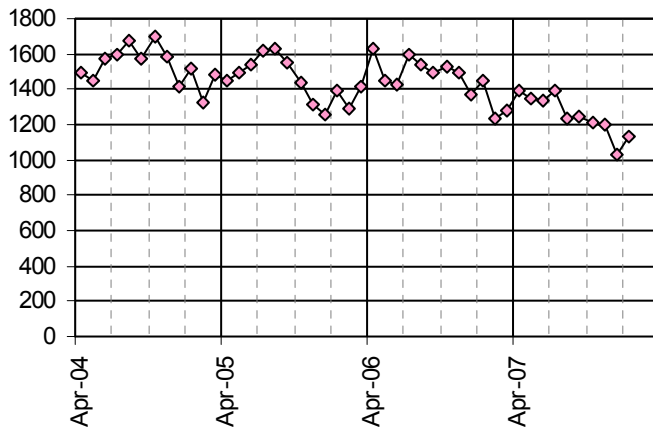


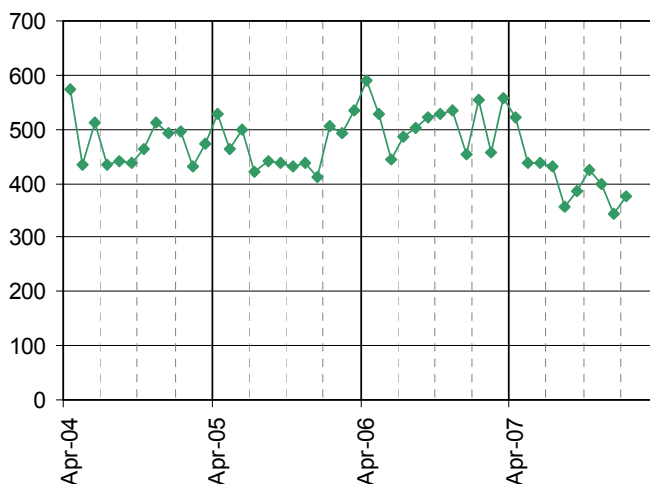
Crime trends and performance in Brighton & Hove

Total BCS Comparator Crimes, April 2004
to January 2008



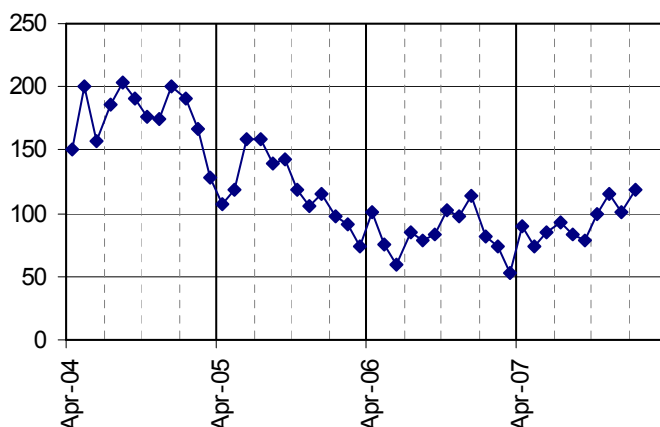
- There have been further drops in recorded BCS Comparator Crimes (a measure of all crimes experienced by households/residents). Levels over the last 6 months have consistently been lower than any month since April 2004. The level in December was particularly low.
- BCS CCs comprise domestic burglaries, vehicle crime, personal robbery, theft from person, theft of pedal cycle, wounding, assault without injury, and criminal damage. They make up just over half of total police recorded crimes.

Criminal Damage, April 2004 to January 2008



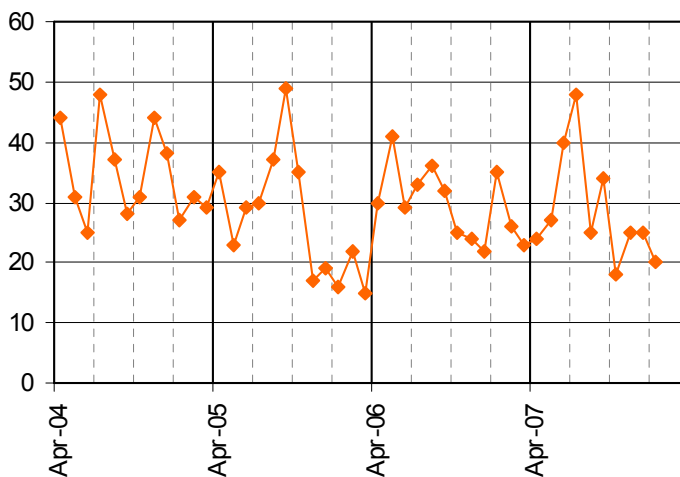
- The number of criminal damage offences recorded dropped to 343 in the month of December, the lowest level since April 2004. Levels over the last six months have consistently been relatively low.

Domestic Burglary, April 2004 to January 2008



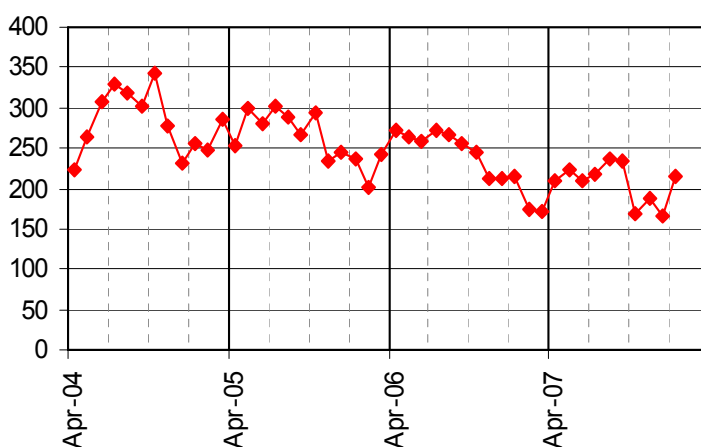
- The number of domestic burglaries has been over 100 in each of the last three months.
- The previous longer term decline appears to have ceased, and numbers over the last few months suggest a slight rising trend. However, levels remain about a third of those recorded ten years ago.

Personal Robbery, April 2004 to January 2008



- Numbers of personal robberies are showing no particular trend. They have been at between 20 and 25 crimes in each of the last three months.

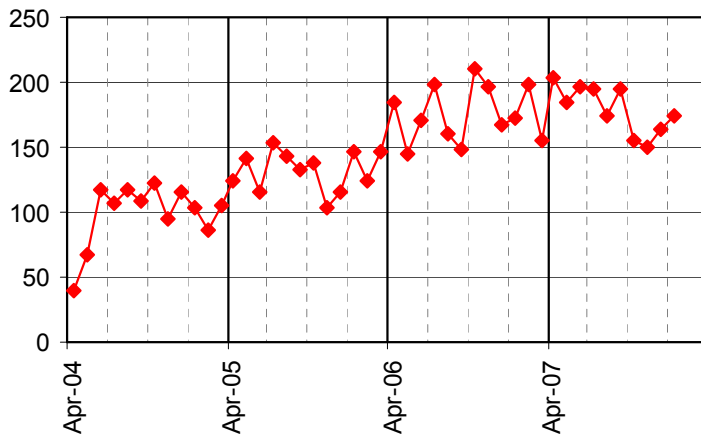
Wounding, April 2004 to January 2008



- The number of police recorded woundings during 2007/08 has remained well below that recorded in the same months 2006/07, with the exception of January 2008 which had the same number as in January 2007.
- Woundings tend to show a seasonal pattern, with higher levels during the summer.

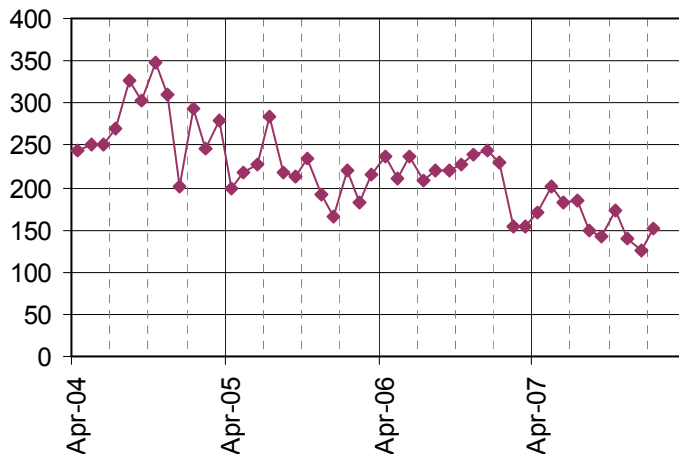
Community Safety Forum, 25th February 2008

Assault without Injury,
April 2004 to January 2008



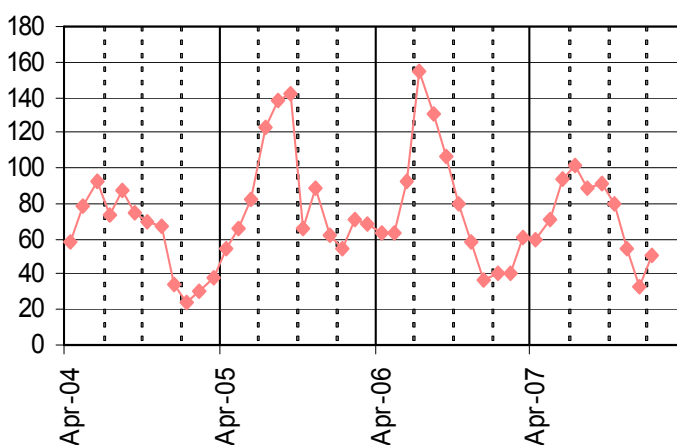
- After a long term increase, there are signs that the rising trend may be stabilising or reversing.

Vehicle Crime, April 2004 to January 2008



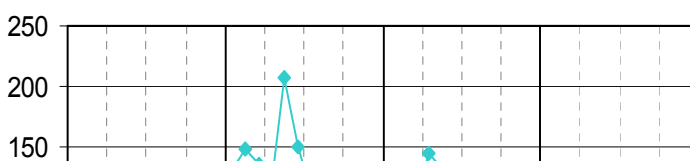
- Vehicle crimes dropped to a low of 125 in December. There is an ongoing downward trend with current levels at nearly half of those three years ago.

Theft of a Pedal Cycle,
April 2004 to January 2008



- There is a clear seasonal pattern to cycle thefts.
- While there were fewer thefts in the first six months of 2007/08 compare with the same period of 2006/07, numbers since October 2007 have been comparable with the same months the year before.

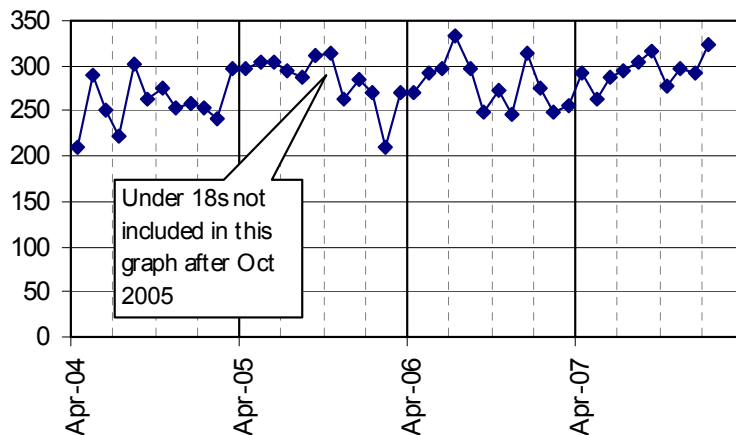
Theft from the Person,
April 2004 to January 2008



- Thefts from the person are seeing a decline with number in December and January being at the lowest level since April 2004.

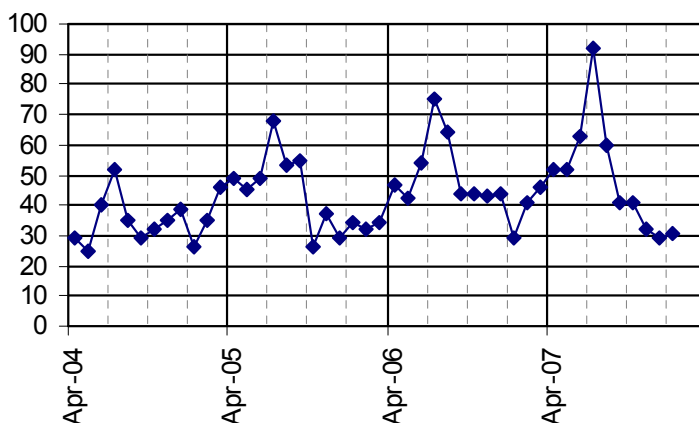
Police crime data presented in this report only reflect those crimes which are reported and recorded. There is likely to be a level of underreporting in nearly all crime types. However, the crimes of domestic violence and of the hate crimes on this page are known to be particularly liable to underreporting.

Domestic Violence Crimes and Incidents,
April 2004 to January 2008



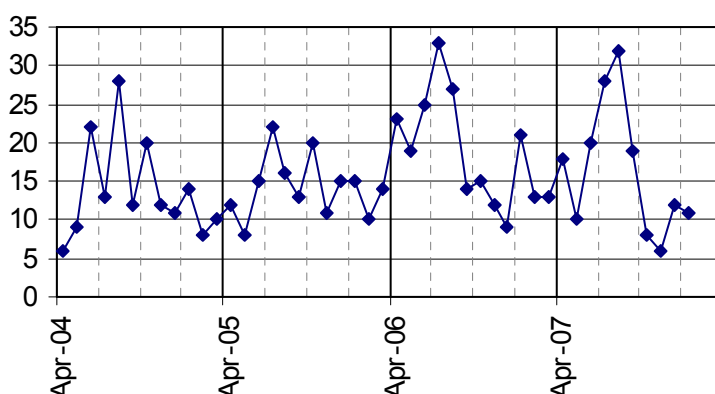
- With domestic violence (and also the hate crimes below) it is difficult to separate out the impact of work to increase reporting and actual levels of incidents occurring.
- Number fluctuate from month to month, but there is perhaps a suggestion of a slight rising trend.

Racist and Religiously Motivated Crimes and
Incidents, April 2004 to January 2008



- A long term rising trend, as well as a seasonal pattern (with enhanced levels in the summer, particularly the month of July), has previously been evident in the data on racist and religiously motivated crimes and incidents. However, levels in November and December 2007 were lower than those in the same months in 2006.

Homophobic, Biphobic and Transphobic Crimes
and Incidents, April 2004 to January 2008



- A seasonal pattern continues to be evident in the data on homophobic, biphobic and transphobic crimes and incidents, with higher levels tending to occur in the summer.

AT-A-GLANCE RESULTS FOR BCS COMPARATOR CRIMES 2007/08 POSITION AT END OF JANUARY

Target for total BCS Comparator Crimes and its constituent subparts: -18.7%	2007/08 performance from April to January compared with same period in 2006/07		better or worse than same period in 2006/07	
	on target	not on target	better	worse
Total BCS Comparator Crimes		-16.4%	☺	
Criminal Damage	-20.0%		☺	
Personal Robberies		-6.8%	☺	
Woundings		-16.2%	☺	
Assaults without Injury		+2.1%		☹
Domestic Burglary		+6.9%		☹
Theft of a Motor Vehicle	-19.0%		☺	
Theft from a Motor Vehicle	-32.9%		☺	
Vehicle Interference		-17.6%	☺	
Theft from the Person	-23.0%		☺	
Pedal Cycle Theft		-12.5%	☺	

There is a stringent target of an 18.7% reduction in total BCS Comparator Crimes in 2007/08 compared with 2006/07. After 10 months (April 2007 – January 2008) these crimes had reduced by 16.4% compared with the same period in the previous year. Although behind target, this represent extremely encouraging performance in 2007/08 to date and the position has once again improved since the previous report to the Community Safety Forum.

All but two of the BCS Comparator Crime subparts are showing a decrease of between 7% and 33%. Only domestic burglary and assaults without injury (previously known as common assault) are showing an increase.

